

Terms of Use

These slides may be used under the following conditions:

- Only for presenting an Introduction to Social System Mapping (SSM) or the SSM Theory of Transformation
 - The term Social System Mapping and the 'Vortex' slides can only refer to maps created using sumApp and Kumu.
 - You may not use these presentations to refer to maps made in other ways.
 - You may add your own logo to slides but do not remove the sumApp logo from slides that have it.
 - You must include attribution to Greater than the Sum and the SSM CoP Graphics team somewhere in the slide deck.
 - If you change the text other than the date on any of the 'Introduction' slides, acknowledge that you've altered our language. i.e. don't attribute meaning or intention to Christine that you haven't either heard or read her to say explicitly several times or else haven't cleared with her.
- You may insert these slides inside of a larger presentation of your own. However, be clear to distinguish what is your content and what is ours.

WHAT IS

Social System Mapping?

JUNE 9, 2023



WHAT IS IT?

Introduction

WHAT IS IT?

Social System Mapping is...

A social system map is a process we can participate in to make sense of the complex systems we are in.

It is like combining microscopes and telescopes, all our shared senses, emotions, intuitions, our comparative experiences, and our thinking minds into one collaborative effort to understand and transform.

At its best, a social system map is not a product we make together, it is a mirror of who we are, who we are becoming, and what we could become.

RECOGNIZABLE PARTS

A synthesis...

social
network
map

asset
map

concept
map

system
map

stakeholder
map

RECOGNIZABLE PARTS

A synthesis...*but different*

social
network
map

asset
map

concept
map

system
map

stakeholder
map

FOR EVERYONE

Online,
interactive,
accessible

FOR EVERYONE

Iterative,
emergent,
dynamic,
ongoing
collective practice

WHAT IS IT?

**A process
more than a
product**

WHAT IS SOCIAL SYSTEM MAPPING?

SO WHAT?

Purpose

SO WHAT?

Supporting systemic transformation

WHAT IS SOCIAL SYSTEM MAPPING?

EVERYWHERE

Supporting a global movement to shift...

systems of
dominance,
exploitation and
extraction



systems of
connection,
reverence and
regeneration



NOW WHAT?

Conditions


SO WHAT?

Supporting systemic transformation

WHAT IS SOCIAL SYSTEM MAPPING?

TWO THINGS

Strong

networks of

wise change
agents

TWO THINGS

Strong
networks of
wise change
agents



SO WHAT?

Two fundamental shifts

WHAT IS SOCIAL SYSTEM MAPPING?

STRONG NETWORKS

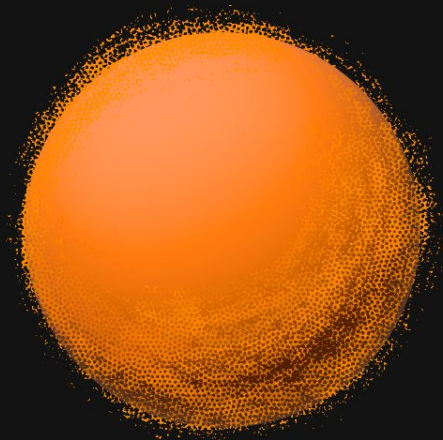
Relational shift

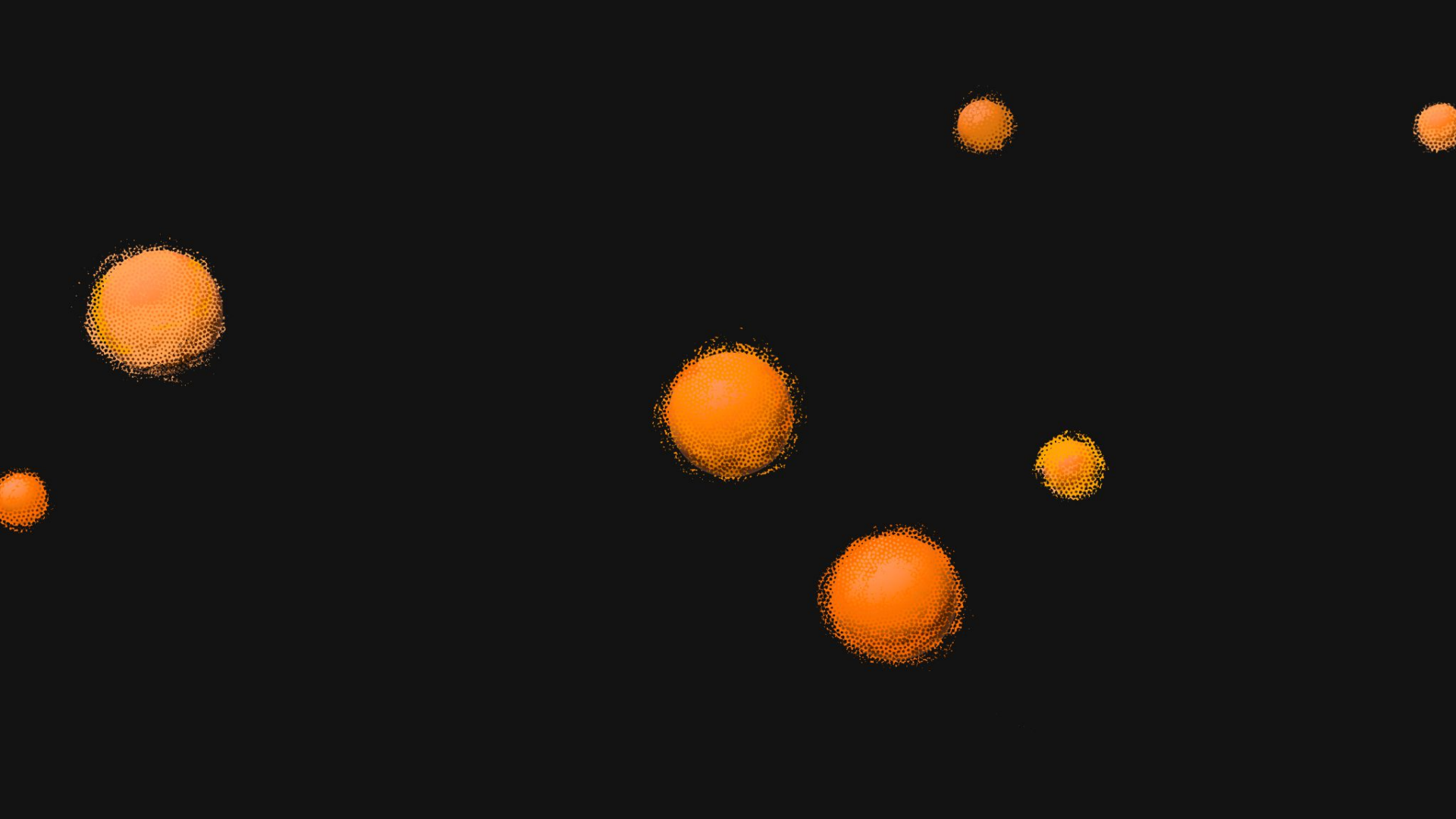


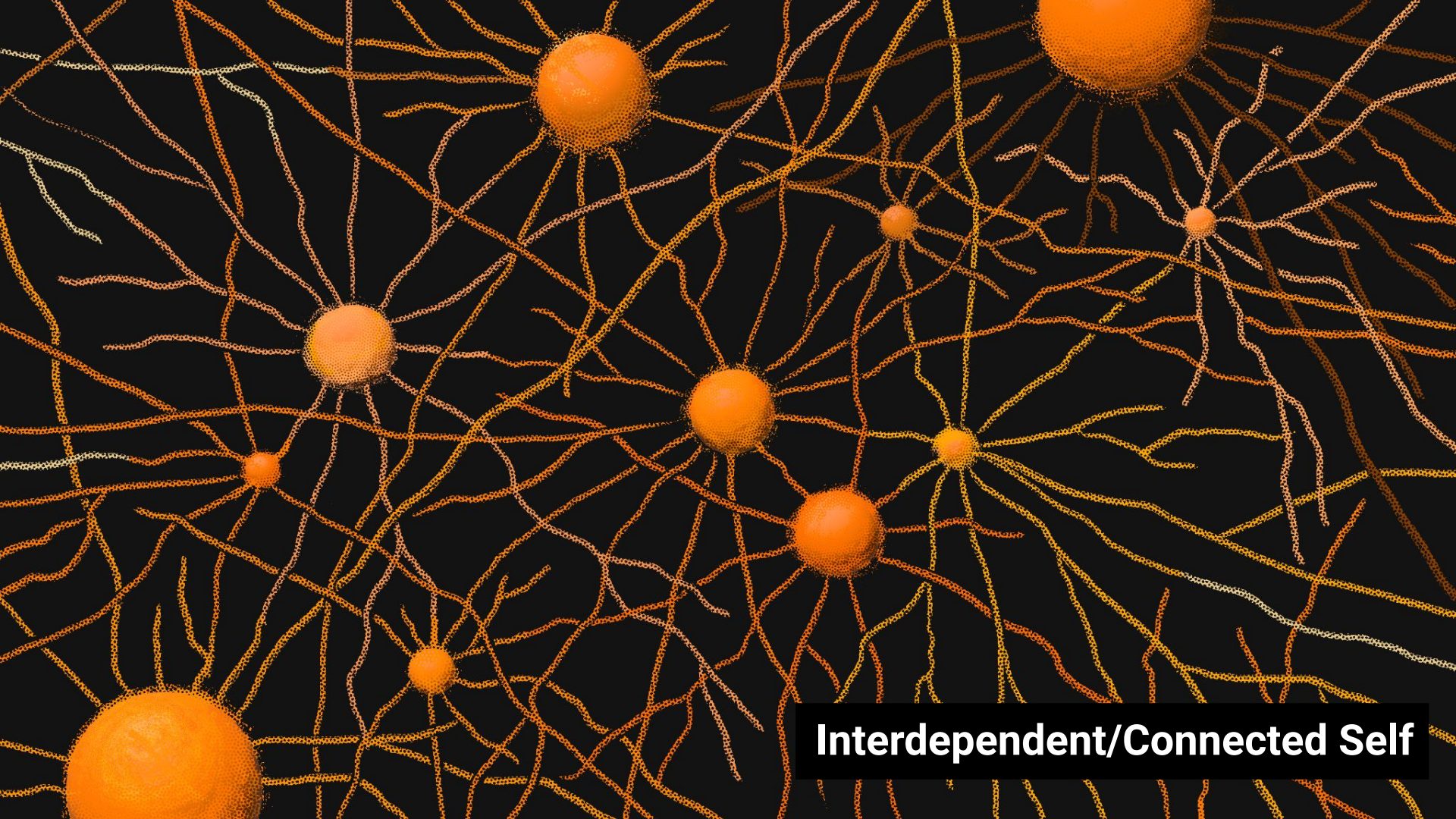
WHAT IS SOCIAL SYSTEM MAPPING?

Separate Self









Interdependent/Connected Self

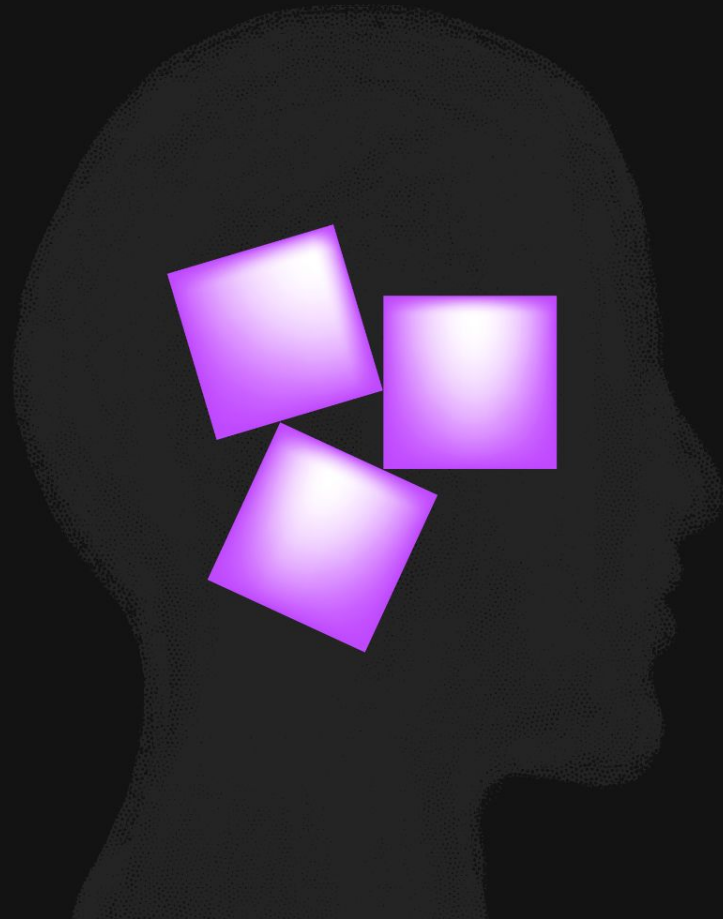
WISE CHANGE AGENTS

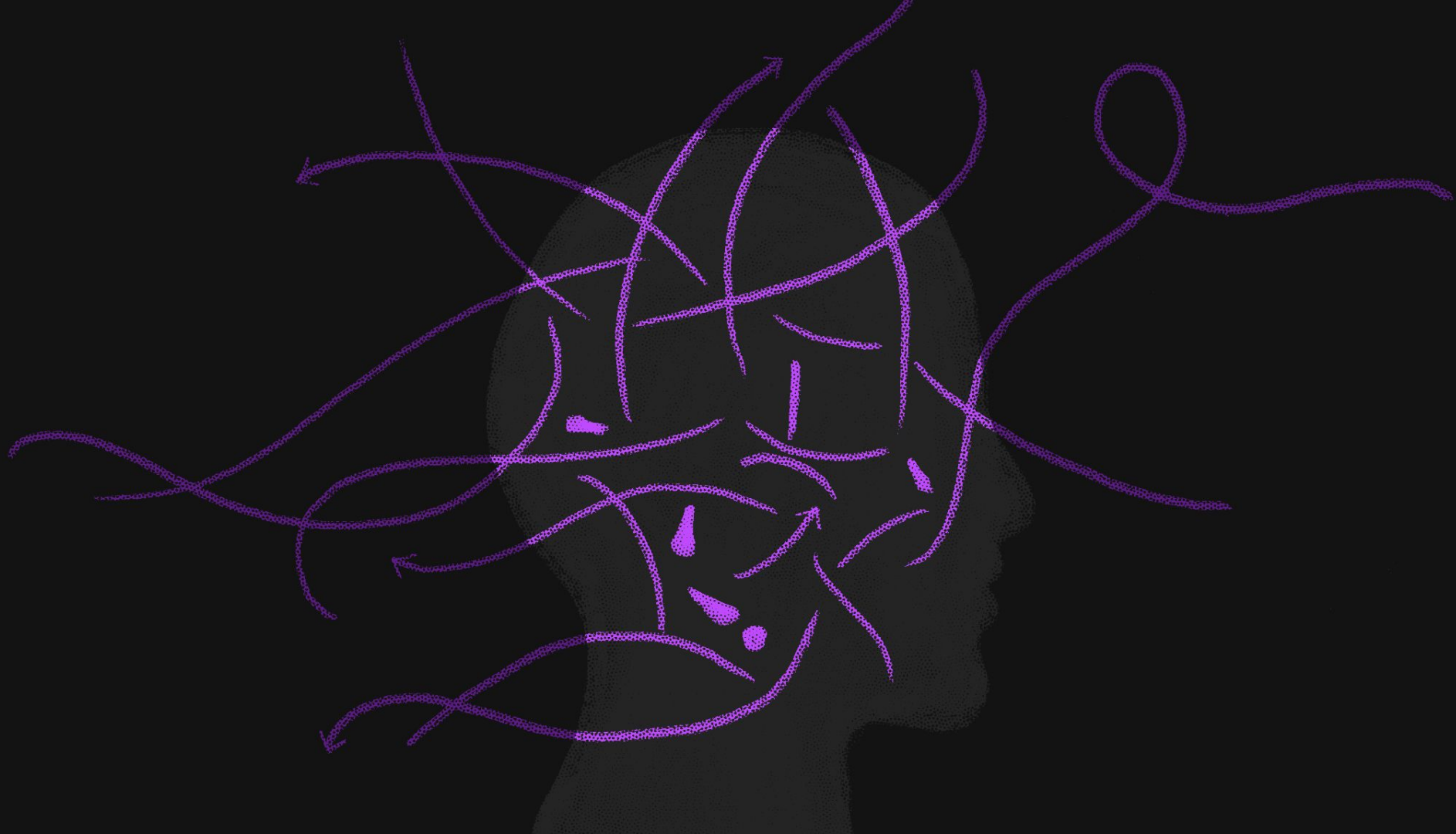


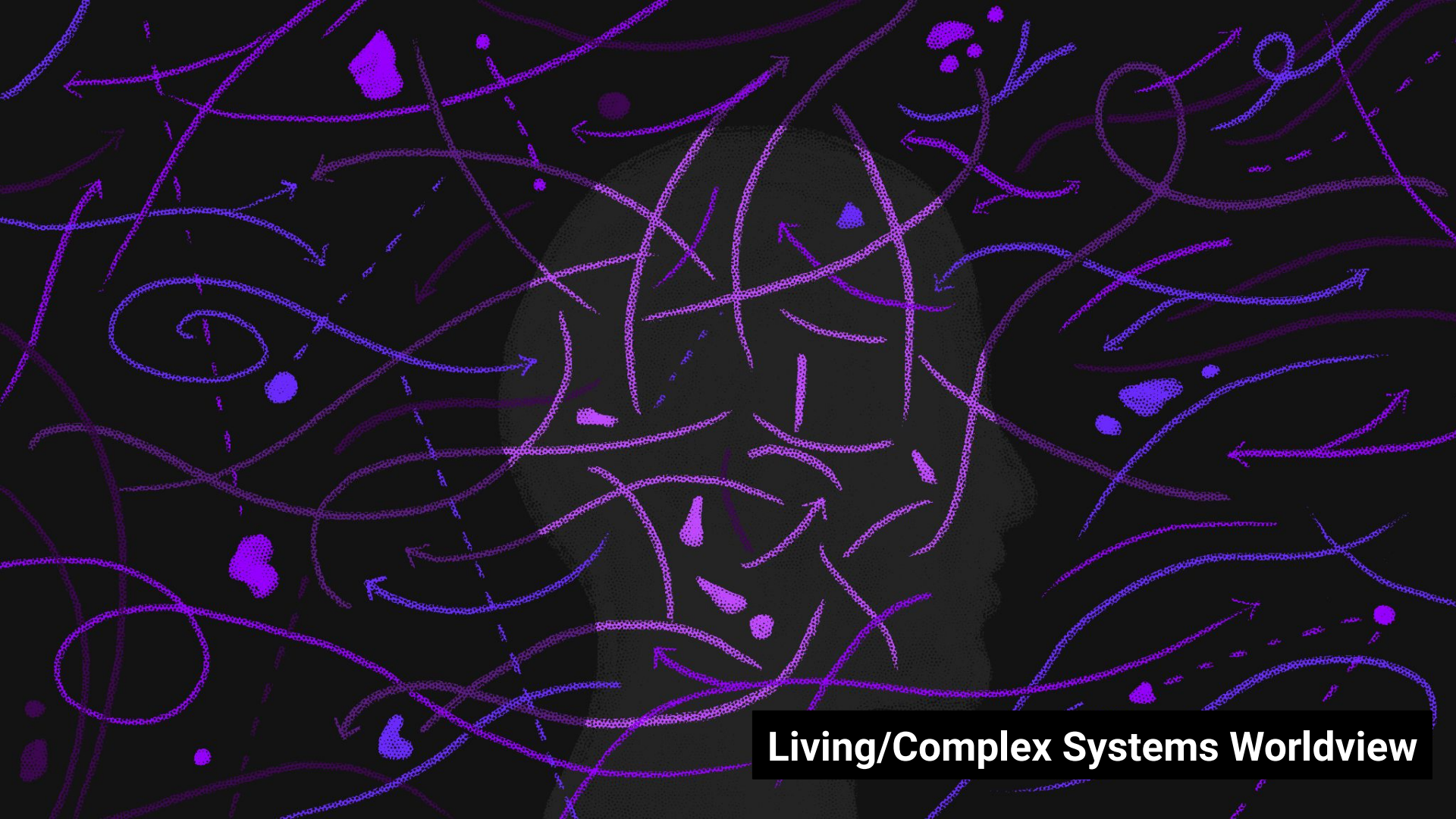
Cognitive shift

WHAT IS SOCIAL SYSTEM MAPPING?

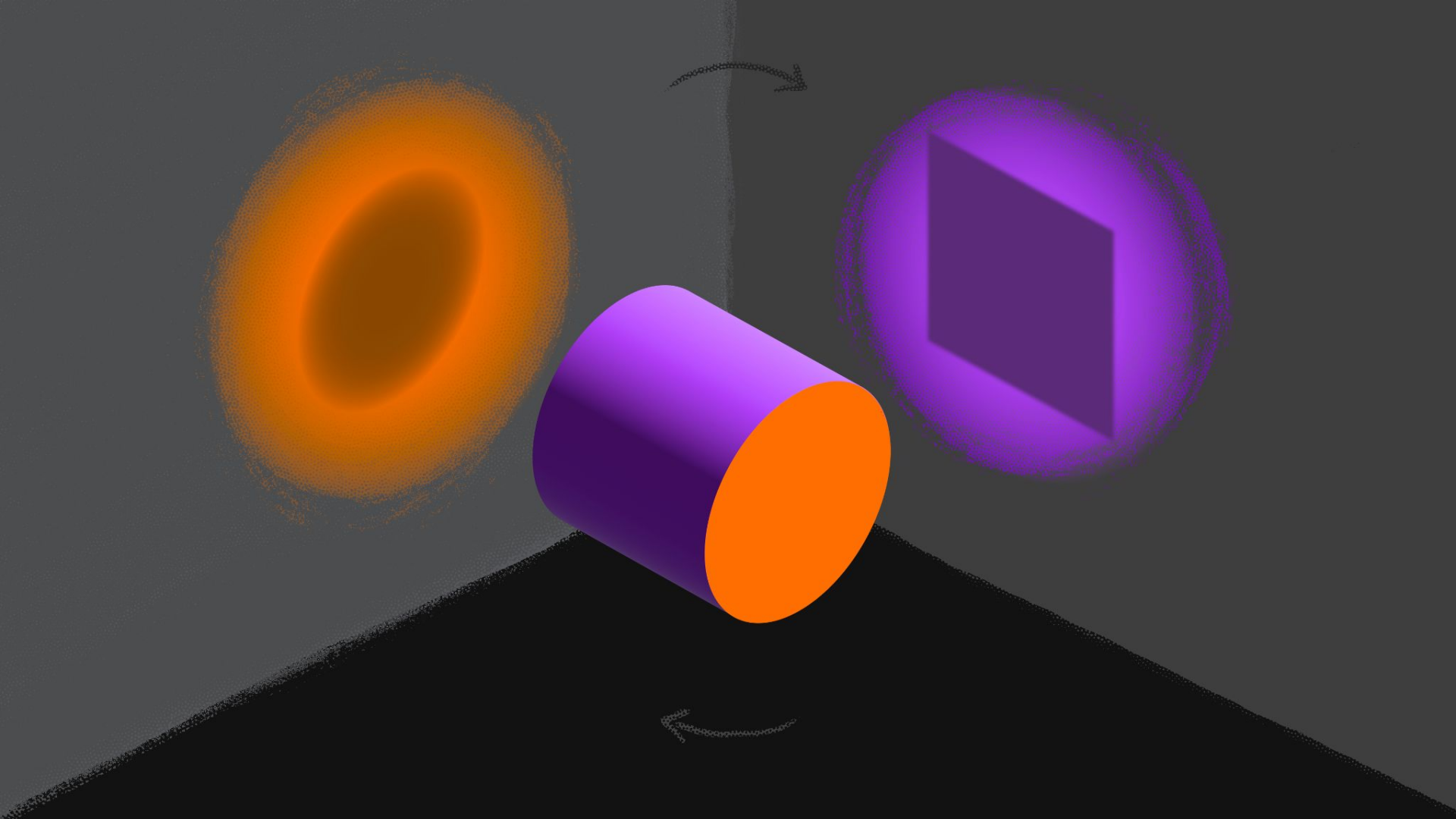
Mechanistic Worldview







Living/Complex Systems Worldview





PUTTING IT ALL TOGETHER

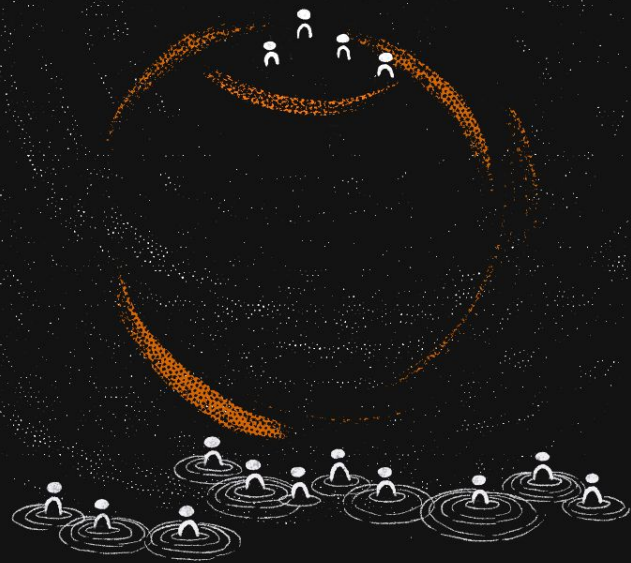
The Social System Mapping Theory of Transformation

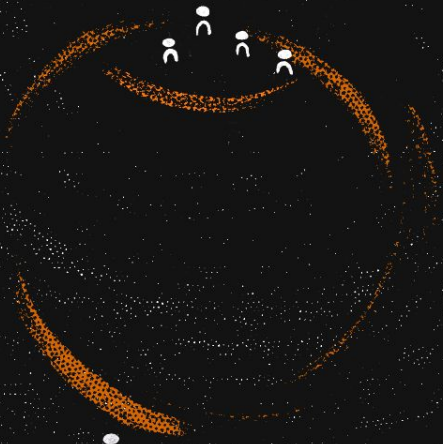
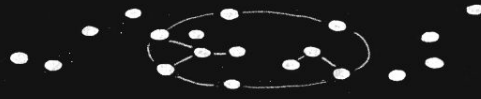
THE VORTEX

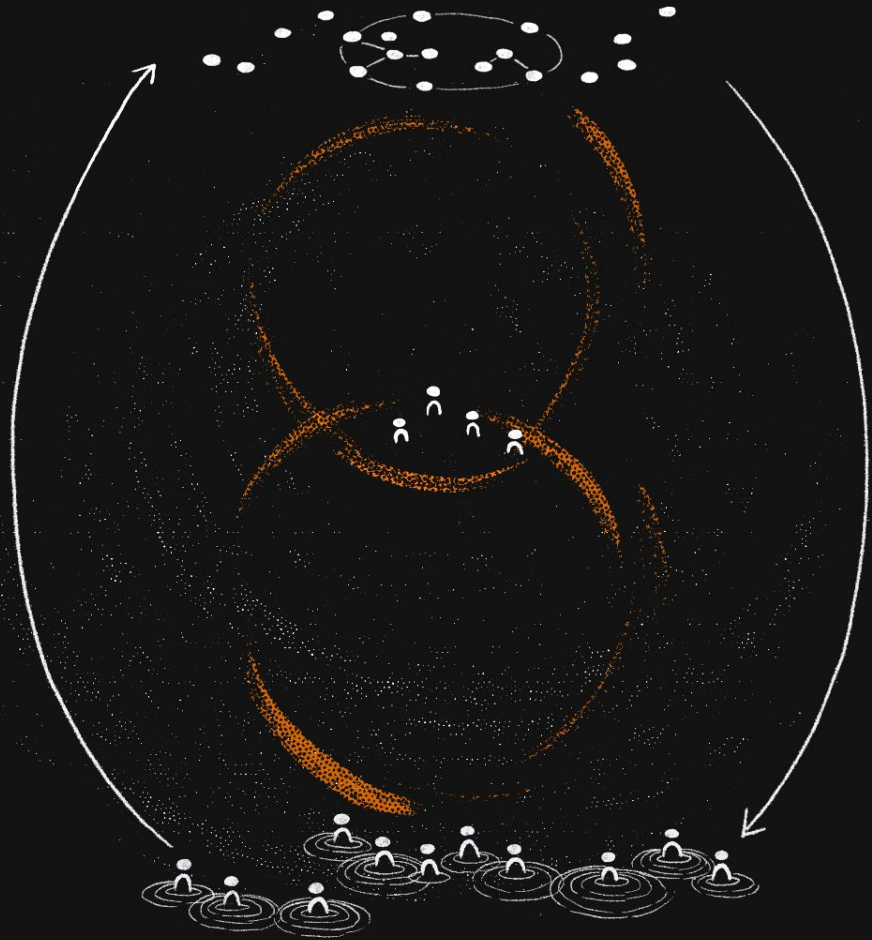




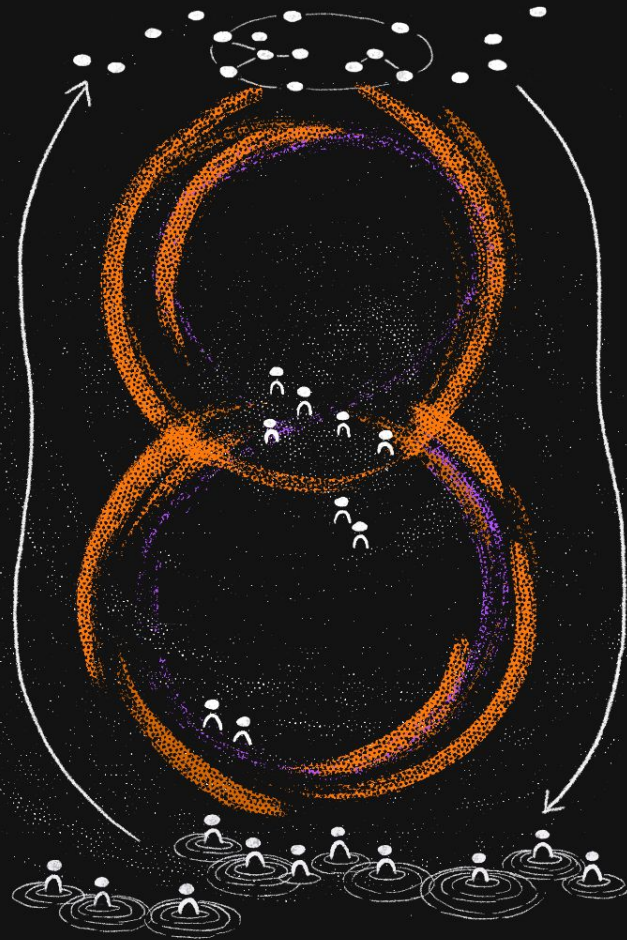


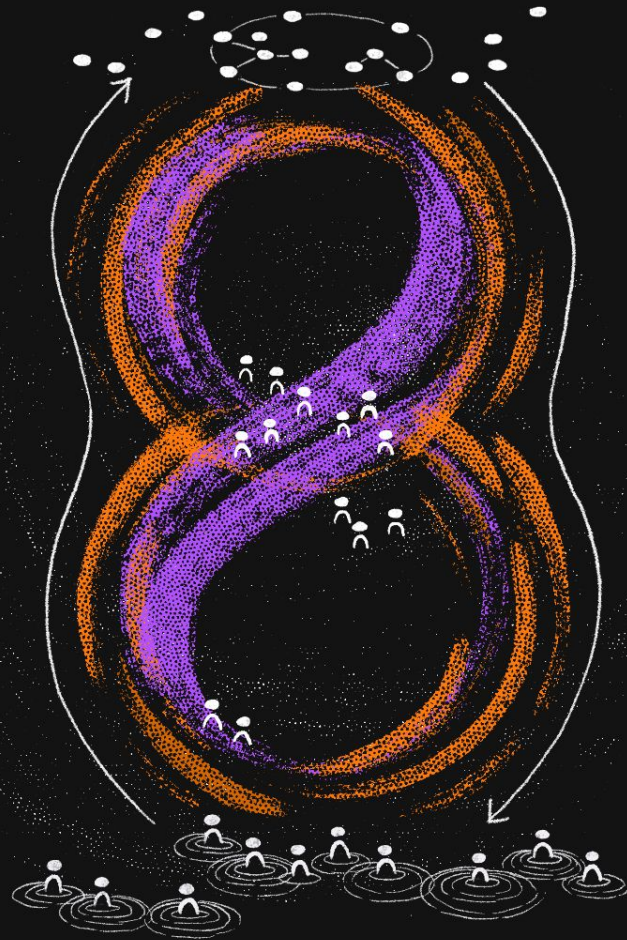


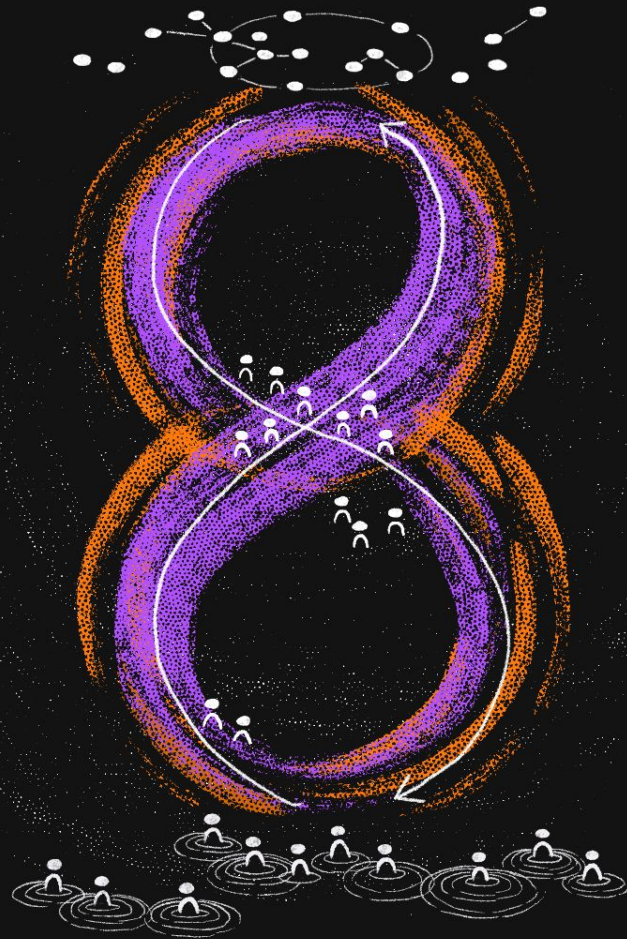












Hello Curtis, the Human Systems Dynamics Network wants to include you in the social systems map

External



Inbox x



Barbara Capps <noreply@sum-app.net>

to me ▾

Fri, Jun 28, 7:55 AM



Dear Curtis,

We'd love for you to be included in the HSD social systems map - it helps you find out who else is in the network and make connections with people who share your questions and interests.

To participate in the map, click **your personal link** https://sum-app.net/members/UupSA0K8_zqHHlw27tQsoQ/bio. You'll be asked to provide a photo, complete a survey with questions about yourself and your HSD practices, and indicate who you are connected to using the provided list of members of the HSD community.

You will be asked for your email address, but it will NOT be posted on the public map. All of the other information you provide will be available for public viewing (unless you select to not have your information shown publicly).

Please note that it takes 24 hours before updates are visible on the map.

Background information on the map can be found on the HSD website [here](#) and the current map is [here](#).

That's it. You can come back as often as you like using your **personal link** https://sum-app.net/members/UupSA0K8_zqHHlw27tQsoQ/bio to update your details.

If you have questions, please feel free to contact me at bcapps@hsdinstitute.org.

Thank you!

Barbara Capps

Human Systems Dynamics Network

You've shared information about 4 connections with us so far. ✕

Hello, Curtis,

Important: using Internet Explorer for your browser may be problematic. That browser is no longer supported or updated by Microsoft, so it often doesn't work with this app, particularly when you attempt to save your entries. We strongly encourage you to use a different browser.

Thanks for taking time to participate in the HSD Social Systems Map!

To get started, here are 3 things we would like you to do:

1. On the Bio tab, upload a photo of yourself. If you have time, add a short bio.
2. On the Survey tab, complete the survey about your background and connection to HSD. This information is key to making the network as useful as possible.

There are many approaches to theory and practice within the Human Systems Dynamics universe, so don't worry if you can't or don't want to answer all of the questions right away. Just fill in as much as you are able. Although no fields are required, the more questions you complete, the more useful the social systems map will be.

If you don't finish the survey right away, you can come back later to complete it. The link to this survey provided in your email is unique to you - you can use it at anytime to return to the survey to add information or make changes.

3. On the Connections tab, search for and identify the people you know, and share how well you know them, to help populate the map with relationships.

When you're done, you'll be able to see who you're connected to and find new people you may want to know based on common interests, common connections, and more. As others are added to the social systems map, we will be inviting you to come back to indicate connections to the new folks.

Note: The term "Segment" means "Cohort Number."

You can see what the map looks like [here](#).

If you have questions, please feel free to contact Barbara Capps at bcapps@hsdinstitute.org. Thank you!

i How we will use this data

General background information about the HSD Social Systems Map, including a link to the map itself, is provided on the HSD Institute [website](#). Please note that no one is included in the social systems map without their permission, and no email addresses are made public.

Providing your photo or other avatar is completely optional.

You've shared information about 4 connections with us so far.

Hello, Curtis,

Important: using Internet Explorer for your browser may be problematic. That browser is no longer supported and doesn't work with this app, particularly when you attempt to save your entries. We strongly encourage you to use a different browser.

Thanks for taking time to participate in the HSD Social Systems Map!

To get started, here are 3 things we would like you to do:

1. On the Bio tab, upload a photo of yourself. If you have time, add a short bio.
2. On the Survey tab, complete the survey about your background and connection to HSD. This information is key to the systems map, if possible.

There are many approaches to theory and practice within the Human Systems Dynamics universe, so don't worry if you can't answer all the questions right away. Just fill in as much as you are able. Although no fields are required, the more questions you answer, the more detailed the systems map will be.

If you don't finish the survey right away, you can come back later to complete it. The link to this survey provided in the survey will allow you to return to the survey at any time to return to the survey to add information or make changes.